



Stone Parcel Becomes Loon Echo Land Trust's Tenth Preserve

Typical animals found in these habitats include barred owl, black-throated blue warbler, chestnut-sided warbler, hermit thrush, red-eyed and blue-headed vireos, roughed grouse, black bear, fisher, gray fox, northern flying squirrel, and white-footed mouse.

WITH A GENEROUS DONATION of 92 acres on the northwest shore of Highland Lake in Bridgton, Dr. Jenny Lee Stone has provided Loon Echo Land Trust with its 10th preserve. Dr. Stone inherited the parcel in 2009 from her father, Charles Stone. In addition to the land donation, Dr. Stone also donated \$2,500 toward the \$40,000 goal for ongoing stewardship of the property.

The preserve has approximately 1,275 feet of frontage along the northwestern shore of Highland Lake. There is also 1,750 feet of frontage along Stevens Brook, also known as Little Trull Brook, which flows into the lake from the north. The northern border of the property is

continued on page 7

Loon Echo Achieves National Accreditation

After two and a half years of research and effort, Loon Echo Land Trust became nationally accredited on August 2, 2017. With Loon Echo's Board's unanimous support, Secretary, Sheila Bourque, headed up an Accreditation Committee to spearhead the effort. The 600 page application was submitted in the fall of 2016. After extensive review, telephone conference calls with the accreditation commission and follow-up questions answered, Loon Echo was awarded the distinction of accreditation.

Accreditation means that Loon Echo is held to the highest standards for stewardship of its preserves, development and monitoring of its conservation easements, and fiscal responsibility for the funds it collects. The accreditation gives potential donors assurance that Loon Echo follows best practices regarding lands it agrees to protect forever.

"It is exciting to recognize Loon Echo Land Trust with this distinction," said Tammara Van Ryn, Executive Director of the Commission. "Accredited land trusts are united behind strong ethical standards ensuring the places people love will be conserved forever. Accreditation recognizes Loon Echo Land Trust has demonstrated sound finances, ethical conduct, responsible governance, and lasting stewardship."

We are honored to be included on the list of 389 accredited land trusts in the United States.



LOON ECHO
LAND TRUST

VIEW FROM THE CORNER OFFICE

Looking forward at the New Year, the Board and Staff are busy continuing the good work of Loon Echo. But before we get too far it's good to take a moment to reflect on 2017.

Heather Rorer our Conservation Easement Manager with her crew of volunteers has completed her work of monitoring LELT's 19 Conservation Easement properties and has finalized updating 3 Conservation Easement baseline reports.

Stewardship Manager Jon Evans spent the year making sure all of the preserves are monitored and maintained. He is excited to increase his duties to add the Stone Preserve to his list.

Our Membership Manager Kelli Shedd kept the office running smoothly, was engaged with correspondence and members, spent time designing the new Preserve and Trails booklet as well as assisting with events all the while preparing for an addition to her family (we celebrated welcoming Maxwell Robert Shedd—born in the wee hours of December 16th). Volunteer Linda Chamberland has been helping to keep up with the office duties during Kelli's absence.

Paul Miller has spent his first year on staff assisting Jon, Heather and me with stewardship and easement issues. He adds a science-based perspective to our efforts.

During the past 12 months, Loon Echo

- Celebrated its 30th Anniversary
- Achieved National Accreditation through the Land Trust Alliance
- Designed, printed and distributed 10,000 Loon Echo Preserve Information and Trails booklets
- Received the donation of a 92 acre property located on Highland Lake in Bridgton and created our 10th preserve—the Stone Preserve

- Worked on Sebago Clean Waters in collaboration with 7 regional and national organization towards the protection of the water through land conservation in the Sebago watershed—the drinking water source for 1/6 of the population of Maine
- Added a staff Biologist to better understand our conserved lands and assist our stewardship and conservation easement efforts
- Added educational/interpretative signage to the Spiller Homestead Loop at the Raymond Community Forest
- Monitored 2,546 acres of conservation easement lands
- Stewarded 31 miles of trails and 4,126 acres of preserve land
- Added technology to improved records security and improvements in stewardship and monitoring
- Electronically recorded 51,957 user-days at 10 of our 15 trailheads
- Held numerous public/educational events/workshops including geology, star-gazing, kid's kite flying, bird watching, invasive species and more.

Currently, we are looking to 2018 with continuing efforts for the long-term care of our conserved lands which is only possible with support from our concerned supporters—forever is a long time. The fun and exciting stuff is the acquisition; the hard part is the ongoing stewardship and monitoring. Each acre of land we conserve requires careful perpetual care.

Stay involved,



Thom Perkins, Executive Director



Early winter morning over Moose Pond

NATURAL PHENOLOGY

Phenology: The study of cyclic and seasonal natural phenomena, especially in relation to climate and plant and animal life.

Loon Echo's lands provide a front row seat to a wide variety of natural events. Here are just a few natural events to note in the coming months ahead.

Winter (Jan/Feb): New fallen snow provides the ideal canvas for spotting animal tracks. Winter bird visitors from up north include Dark-eyed Juncos, Snow Buntings, Evening

Grosbeaks, and Crossbills. The winter constellations are brilliant in the cold, moonless nights. Bundle up to enjoy these winter treats.

Early Spring (Mar/Apr): On the first warm (above 40 degree) rainy night, frogs and salamanders will be crossing roads looking for ponds and vernal pools to breed in. Migratory birds begin to return (Red-wing Blackbirds are good harbingers of spring) and plants start to green up while the first wildflowers of the season start to bloom.

Late Spring (May): This is the height of bird migration. Look for local birds start nesting. Trees begin leafing out; wildflowers will be blooming in the woods, fields and marshes. Butterflies, Dragonflies, and Damselflies become more abundant.

Summer (June): The early morning bird chorus is at its height. Starting before sunrise and waking us up if the windows are open, we are serenaded by the flute-like songs of thrushes and the melodies of warblers.



Spotted salamander



Paul Miller, LEIT
Conservation Biologist



Red crossbill



Wood thrush

VOLUNTEER SPOTLIGHT

ALLEN ERLER

Hometown: Lawrence Mass. Now lives in Bridgton, Me.

Favorite outdoor activity: hiking/snowshoeing

First connected with LEIT: Hackers Hill, Celebration '13

Occupation: Retired self employed independent property insurance adjuster.

Volunteer roles with LEIT: member of the Board of Directors, Chair of the stewardship comm., trail adopter, conservation easement monitor,

Why do you volunteer for LEIT? "I feel it is important to keep lands available to all of us for rest and recreation. Being able to have places to go for exercise, being out in the woods and spectacular views are inspiring to me."



BOB TRAVIS

Leave a Legacy of Conservation Join the Bob Chase Legacy Society

Loon Echo has pledged to forever care for the land that you help us conserve today. Together, we can save places that are important to you and your family. When you include Loon Echo in your estate planning, you'll keep making a difference for generations to come.

For more information about making a planned gift, call us at (207) 647-4352 or info@leit.org.

JANUARY- JUNE CALENDAR OF EVENTS

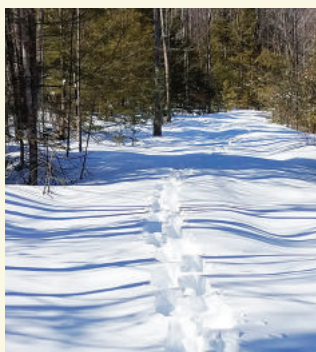
All outdoor events are subject to weather conditions and/or date changes. Events will be postponed or cancelled when dangerous conditions or heavy weather are forecasted. For more information, please contact (207) 647-4352, stewardship@lelt.org or check our website at www.lelt.org for updates and additional activities. For hikes and work days, always wear appropriate clothing and footwear for the weather conditions and varied terrain. Bring a map, water and snacks with you. Obedient dogs are welcome at LELT events unless specified. "Like" us on Facebook for information on upcoming programs!



Snowshoe Hike at Intervale

January 20, Harrison

The Crooked River is famous for Landlocked salmon, brook trout, towering pines and exceptional water quality. Join us at the Intervale Preserve for what will prove to be a fascinating hike and talk along the banks of this magnificent AA rated river. Meet at the parking area on Scribner's Mill Road at 9:00 AM. Approximately 3 hours. *Moderate to strenuous*



Great Maine Outdoor Weekend

February 10, Bridgton

The GMOW weekend features a variety of fun outdoor family activities across the Northeast. Join Loon Echo staff for a snowshoe hike and scavenger hunt at Five Fields Farm and Bald Pate Mountain Preserve in Bridgton on Saturday February 10. Five Fields Farm has generously waived their snowshoe rental fee for the day. Warming hut, hot drinks and yummy snacks will be available. Meet at Five Fields Farm and XC Center 720 South Bridgton Road at 9:00 AM. Approximately 3 hours *Moderate to strenuous*

Winter Film Night: Racing Extinction

February 16, Bridgton

Join Loon Echo Staff from 6-8PM as we show the documentary "Racing Extinction" at our Depot Street office. Scientists predict that humanity's footprint on the planet may cause the loss of 50% of all species by the end of the century. Director Louie Psihoyos has crafted an ambitious mission to clearly and artfully pull into focus our impact on the planet, while inspiring us all to embrace the solutions that will ensure a thriving, biodiverse world for future generations. Seating is limited. Approximately 2 hours. *Easy*

Sunset-Moonrise Hike

March 31, Bridgton

Join Loon Echo staff for what proves to be a very popular hike when conditions allow! Guests will meet at the main parking area at Bald Pate Mountain Preserve at 6:00 PM for the 30 minute scramble to the summit. The

sun will set at 7:05 and the full Pink Moon will rise at 7:25. This also happens to be a Blue Moon (the second full moon of a month). Along the way, guests will learn the great story of how Bald Pate Mountain was permanently protected, the critters that call it "home" and its future management. Snowshoes or traction devices may be required. Don't forget your headlamp for the return trip! Water and snacks always encouraged. Approximately 2 hours. *Moderate*

Trail Work at Pleasant Mountain

April 14, Denmark

Interested in trail maintenance? Come along with Loon Echo and Maine AMC volunteers as we make our return to the Ledges Trail after the long winter, Saturday April 14. Clearing drainage, building rock steps and removing brush will be on the agenda if conditions allow. Tools and training provided. Appropriate work



clothes, pants and boots required, plenty of water and snacks always encouraged. Meet at the Ledges trail head parking area at 7:45 AM. Approximately 6 hours. *Strenuous*

Earth Day Cleanup

April 21, Bridgton

Meet staff from Loon Echo and Lakes Environmental Association at the Bridgton Community center at 9 AM, Saturday April 21 for a morning of cleaning up Bridgton streets. Work boots, gloves, bug spray and water recommended. Afterwards, stay for a picnic put on by the Bridgton Community Center. Approximately 3 hours. *Easy to Moderate*.

Earth Day Hike

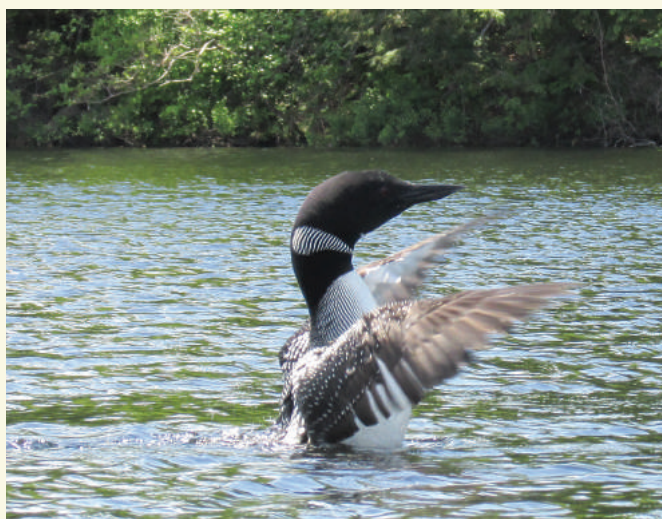
April 22, Bridgton

Join Loon Echo staff and friends as we make the trek to the rocky summit of Bald Pate on Saturday April 22, at 3:00 PM. Feel free to share music, poems or stories that embody the spirit of the day. Sturdy hiking boots or shoes, water and snacks recommended. Approximately 2 hours. *Easy to moderate*

Vernal Pool Experience

May 5, Denmark

Vernal pools are temporary bodies of water found in our forested lands in the spring. By late spring these pools dry up for the remainder of the year but not before they provide an important breeding habitat to a variety of animals such as wood frogs, spotted salamanders and the rare fairy shrimp. Join Loon Echo Biologist Paul Miller to learn more about these unique bodies of water and why they are important indicators of forest health. Access to the pool is a short ~5-minute walk in from the Ledges Trail parking area, however, sturdy, waterproof hiking boots or shoes are recommended. Bring your binoculars as migrating birds may join us! Meet at the Ledges parking area at 10:00 AM. Approximately 2 hours. *Easy to Moderate*



Spring Bird Migration Talk

May 9, Harrison
6:00 PM to 7:00 PM

Join Loon Echo Biologist Paul Miller at the Harrison Village Library as he presents an informative talk about the spring migration of birds. Every year during spring migration, millions of birds head north to breed after spending the winter in warmer places as far away as South America. Many of these long distance travelers stop in Maine to breed, as others continue into Canada as far north as the Arctic. Learn what conditions are ideal for viewing migrants, species of interest to look for, as well as helpful resources online for tracking bird migration. This program is being held in advance of Loon Echo's Bird Watching and Identification at Dunning Bridge the following Friday, May 11th. *Easy*

Bird Watching and Identification at Dunning Bridge

May 11, Bridgton

Join Loon Echo and Lakes Environmental Association staff as they welcome bird watcher and columnist Jean Preis to the Dunning Memorial Bridge at Pondicherry Park to observe migratory birds as they make their way back from the south. If conditions allow, warblers will be the main attraction! Birders of all levels are welcome. Binoculars and

a field guide to birds of the region are recommended. The Dunning memorial Bridge is accessible to folks of all ages and abilities. Please no dogs for this event. Meet at the main kiosk on Depot St at 7:00 AM. Approximately 3 hours. *Easy*

Children's Wildflower Walk and Exploration

May 12, Casco

Interested in getting your budding naturalist outside and on the trail? Loon Echo staff invite children and their families to Mayberry Hill Preserve for a nature walk filled with trail activities and games to help your child learn more about the natural world around them. Parents and caregivers will learn tips and tricks for making outdoor adventures with their kids fun and educational. Meet at the trailhead at 10 am. *Easy*

National Trails Day

June 2,

Come along with Loon Echo staff on a trail project, location TBD

Summer Solstice Hike

June 21st, Bridgton

Join us for the annual Summer Solstice Hike up Bald Pate Mountain. Meet at the main parking area at 3:00 PM. This annual trek has been a Loon Echo tradition for nearly 20 years, a fun way to welcome summer's arrival! Feel free to share music, poems or stories that embody the spirit of the day. Sturdy hiking boots or shoes, water and snacks are always encouraged. Approximately 2 hours. *Easy to moderate*



Beaver activity



Kite day, Hacker's Hill

NOTES FROM THE TRAIL

WITH THE BUSY HOLIDAY SEASON BEHIND US, THE BORING winter sets in... **WRONG!** We have some fun programs and of course, the best trail system around to keep you off the couch and on the move this winter!

2017 was a tremendous year for our many friends. Winter brought mounds of snow and the summer and fall weather could not have been more beautiful. Perhaps you joined us as we snowshoed along the Crooked River, kayaked Hancock Pond, grooved to Bruce Marshall at Hackers Hill or scrambled up Pismire Bluff to catch the foliage. Maybe you picked

Loon Echo Land Trust Preserve Users 2017												
Site	Jan	Feb	Mar	Apr	May	Jun	Jul	Aug	Sep	Oct	Nov	Dec
Pismire Bluff	158	91	71	81	125	156	248	232	185	244	148	72
Spiller Homestead Loop	276	115	90	92	159	226	337	273	348	319	96	109
Bald Pate (Bob Chase Trail)	398	239	242	236	258	353	857	724	379	519	326	350
SW Ridge Trail	170	102	72	210	265	253	561	363	337	337	170	170
Ledges Trail	275	264	195	457	645	759	1,476	1,305	1,047	1,015	452	240
Fire Wardens Trail	307	323	259	206	199	237	373	342	272	308	186	84
Mayberry Hill Trail	62	47	28	71	106	161	229	254	199	195	85	69
Bald Peak Trail	237	304	132	317	284	161	336	312	269	246	144	78
Hackers Hill*	118	363	366	136	57	67	1,500	1,500	1,500	1,500	100	100
Pondicherry Park**	800	800	800	900	1,000	1,500	1,519	3,279	2,292	2,113	1,111	842
Projected Total										51,957		
Cells in pink are projections due to data dropouts and relocated sensors												
* Jan - June count on eastern trail. Sensor relocated to Pondicherry Park. Summer count projected use.												
** Pondicherry Park sensor installed July 2017. Jan - June projected												
Trafx thermal trail use counters. Algorithm was used to adjust for two way trips where appropriate.												

Trail count summary, 2017



Property Volunteers Needed

Loon Echo is looking for a few new volunteers to help monitor our conservation easements. This is a great way to get outdoors and see some of the less well-known properties Loon Echo has conserved. Even if you are only in the area for a few months, we would be happy to have you join the team. If you can help, please contact Heather Rorer, conservation@lelt.org or 207-647-4352.

blueberries at Pleasant Mountain, caught a sunset at Bald Pate or hunted the elusive white tail at Mayberry Hill; Loon Echo preserves continue to offer the best recreation opportunities in the region, all at no charge.

One new attraction is the interpretive signs at Raymond Community Forest. Currently there are 7 signs along the Spiller Homestead Loop that offer interesting information from tree identification, to geology and to local history. This is a new endeavor for us; let us know what you think!

When asked how many folks were hiking our trails, at the time "new" Director Perkins was told "lots"! So, we invested in 9 infrared trail counters to make this answer more scientific. At the time of this writing, the 31 miles of LELT trails were on pace to see more than 50,000 visitors! This important data helps us prioritize trail projects and consider management strategy. This data also would suggest that Loon Echo's impact on the local economy may be far greater than imagined and may entice new membership from within the business community.

Finally, the great storm at the end of October raged through the lake region and left major problems for our service area. Upon initial inspection, Loon Echo lands appeared to be in pretty good shape considering the near hurricane force winds at our summits. We reached out to our many friends asking for their help in assessing the 31 miles of trails we manage. The response was incredible and all trails were inspected for downed trees and erosion issues within 10 days of the storm. Many trees were cut by chainsaw and loads of debris cleared from the trail by many hands. Our dedicated trail adopters work almost exclusively on maintaining drainage throughout the year and it paid off as there were no erosion issues documented. Since 2005, Loon Echo has raised and invested nearly \$150,000 on erosion control projects, mostly at Pleasant Mountain Preserve. These investments protect our streams, rivers and ponds from sediment and provide a pleasant user experience. To all of our dedicated stewards both formal and anonymous, THANK YOU!

Jon Evans, LELT Stewardship Manager

continued from page 1

the Bridgton-Sweden town line. The highest point is on the side of Green Hill, at approximately 680 feet. From there, the landscape slopes down to the lake, which is at approximately 425 feet.

The preserve is composed of an unbroken typical northeast forest, dominated by hardwoods such as red oak, maples, and beech, with softwoods such as white pine and hemlock. The Nature Conservancy identifies the upland forest type found on the preserve as Appalachian (Hemlock)-Northern Hardwood, with Interior Pine-Oak at lower elevation along the lakeshore. Typical animals found in these habitats include barred owl, black-throated blue warbler, chestnut-sided warbler, hermit thrush, red-eyed and blue-headed vireos, roughed grouse, black bear, fisher, gray fox, northern flying squirrel, and white-footed mouse.

The wetlands found on the preserve make up the northern part of Highland Lake and are classified as wet meadow shrub swamps. This habitat is known to be inland wading bird and waterfowl habitat by the Maine Department of Inland Fisheries and Wildlife. Animals found in this habitat include flycatchers, common yellowthroat, swamp sparrow, lemmings, shrews, salamanders, frogs, snakes, and turtles. Due to the boggy nature of the habitat, unusual and even rare plants may be found there as well.



JON EVANS



The Sustainability Society

*A special giving program
of Loon Echo Land Trust*



Loon Echo's monthly giving program, the Sustainability Society, provides an easy way for members to make recurring monthly or quarterly gifts. Recurring donations from a checking account, savings account or credit card are the best way to provide steady support to Loon Echo year round. You set the amount (starting at \$10.00/month) and we'll send you a summary of your gifts each year. If you are interested in joining, contact

Kelli Shedd at membership@lelt.org or
207-647-4352.

Thank you to the following members of our Sustainability Program that make recurring gifts to help grow and sustain our mission:

Karen Eller	Appleton and Caroline
Frederica Baxter	Mason
Daniel and Betsy Crofts	James and Linda Jones
Alan Sparks	Christine and Bill
Patricia Banks	Bradstreet
Paul and Lucia Woodruff	Randi and William
Margaret Nation	Strathmann



Dr. Stone

In the big picture view of the landscape, the property along with Highland Lake itself are in the Willet Brook watershed, a subunit of the greater Sebago watershed. The preserve adds even more acreage to the total amount of land in this watershed that is being conserved in order to protect water quality.

Current management goals for the Stone Preserve include long-term protection of the water quality in Highland Lake and waters downstream to Sebago. Permitted public uses such as hiking, cross-country skiing/snowshoeing, hunting, and nature observation.

It is with support and concern for land conservation such as Dr. Stone's that assist Loon Echo with its conservation efforts. We thank her for her generosity.



8 Depot St., Ste 4
Bridgton, Maine 04009
207 647 4352
Address service requested

Trek 2017 Stats

Thank you to all who participated and generously donated to make our biggest annual fundraiser a success!

\$23,850

Total gross revenue

114

Total bike reg

\$12,350

Total expenses

47

Total hike reg

\$11,500

Net revenue

75

repeat participants

\$3,405

Total pledges

86

new participants



STAFF

Executive Director
Thom Perkins
execdir@lelt.org
Stewardship Manager
Jon Evans
stewardship@lelt.org
Membership Manager
Kelli Shedd,
membership@lelt.org
Conservation Outreach Manager, Heather Rorer,
conservation@lelt.org
Biologist
Paul Miller,
biologist@lelt.org

BOARD OF DIRECTORS

David Diller, *President*
Norm Nicholson, *Vice President*
Bob Gowdy, *Treasurer*
Sheila Bourque, *Secretary*
Connie Cross
Eric Dibner
Karen Eller
Allen Erler
Ed Friedman
Dick Lemieux
Carol Sudduth



8 Depot St., Ste. 4
Bridgton, Maine 04009
207-647-4352
info@lelt.org



Membership Form

Please find enclosed my/our tax deductible gift to Loon Echo Land Trust in the amount of \$ _____.

- | | |
|--|---|
| <input type="checkbox"/> \$5000 Guardian of the Land | <input type="checkbox"/> \$250 Land Steward |
| <input type="checkbox"/> \$2500 Keeper of the Land | <input type="checkbox"/> \$100 Land Protector |
| <input type="checkbox"/> \$1000 Land Trustee | <input type="checkbox"/> \$50 Land Saver |
| <input type="checkbox"/> \$500 Land Conservator | <input type="checkbox"/> \$_____ Other |

Make A Gift



☐ Check Included ☐ Visa ☐ MasterCard # _____ Exp. _____

Mailing Address (Primary):

Name(s) _____
Address _____
City, ST, Zip _____
Email: _____
Phone: _____

Additional Information:

Seasonal Address _____
City, ST, Zip _____
Dates From _____ To _____
Phone _____
Lake _____

✂ Loon Echo Land Trust is a 501(c)3 non-profit organization and your gift is tax-deductible. Thank You!



like us on Facebook

